



## MANUAL MATADOR 4 SURFACE MOUNT SYSTEM



Heald's Manual Matador 4 is closely based on the IWA 14-1 tested Matador 3 and offers a similar combination of security, automatic operation and surface mount installation.

The Matador 3 is the only surface mount automatic sliding bollard system available tested to halt a 7.2 tonne truck travelling at 64 kph. Not only did the Matador 3 arrest the test vehicle with a zero penetration rating, it also continued to function following the impact with no repairs. The Matador 4 is designed and manufactured to the same exacting standards.

The Manual Matador 4 consists of two fixed bollards on a plate with two central sliding bollards. Easily opened & closed via mechanical lock. This makes it perfect for use in areas where constant pedestrian access is required. The system can also take alternative top plate covers to aid integration with local aesthetics; for example it could be specified with paver's to match an existing roadway.

The Matador offers a number of advantages over more traditional systems. Its surface mount installation is not only extremely fast and efficient, it also allows for fitting in areas where even shallow mount is impossible. It can be installed with a minimum of disruption to the road surface, making it ideal for short term or temporary installations.





## MANUAL MATADOR 4 SURFACE MOUNT SYSTEM



Please note: image from HT2-Matador 3 IWA-14 test

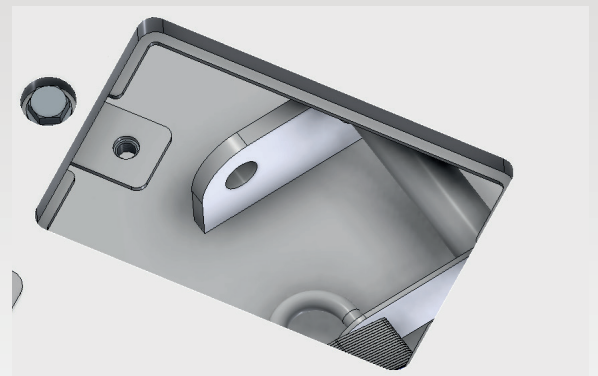
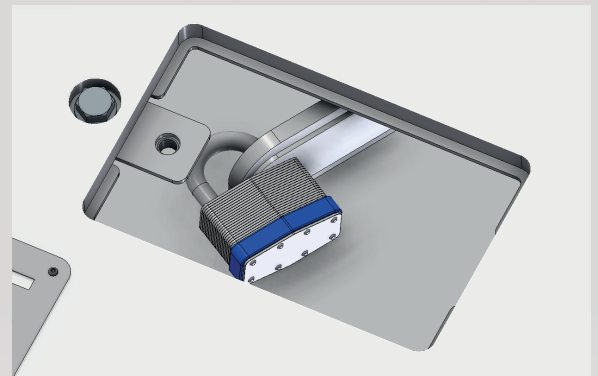
### Basic operation Sequence

1. Remove access cover to locate closed locking pin and padlock
2. Remove padlock, allowing the pin to be released
3. Replace access cover
4. Slide bollard to the open position
5. Remove access cover to locate open locking pin
6. Slide locking pin forward to lock bollard and padlock in place
7. Replace access cover

To close repeat process in reverse

<b>Bollard Height</b>	1140 mm
<b>Base Dimensions</b>	5300 mm length x 2140 mm depth x 110 mm height
<b>Composition</b>	Welding in accordance with BS 4872-1:1982. Manufacturing in accordance with BS 6571.
<b>Finish</b>	Base shot blasted and applied with special hard wearing resin Top surface finished with anti-slip coating Bollards galvanised with stainless steel covers
<b>Sitework</b>	No pre-cast pit required. Various levels of installation service available. Please contact Heald for further details. Detailed drawings, technical guidance and full maintenance offered.
<b>Matador</b>	© Heald Ltd 2010 Granted US Patent US9,315,956; Granted US Patent US10,119,230; Granted EP Patent EP2776631 (GB, FR, SE, NO, NL, IT, DE, TR)

### Manual Matador Locking Pin



Due to a continuous program of development Heald reserve the right to change specifications at any time.